



# PORTALMAR

BEACHFRONT RESIDENCES HOTEL & MARINA





RESIDENTIAL BUILDINGS

# LUXURIOUS SPACES

Experience luxury in these beachfront low condo buildings. Eight exquisite apartment models featuring open living spaces, floor-to-ceiling windows and terrace with infinity views to the Caribbean Sea.

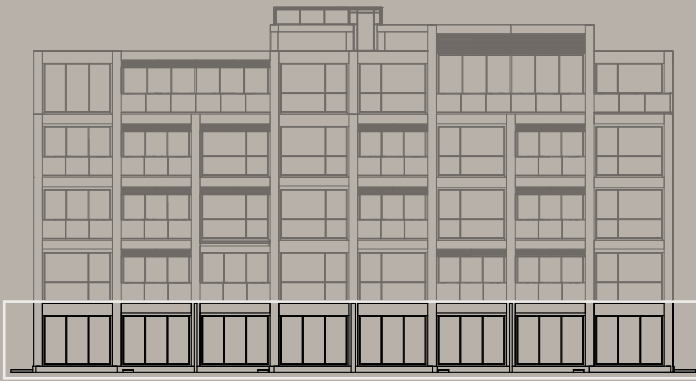
Smart home technology and high-end designer finishes ensure a perfect blend of elegance and modern convenience.

16 apartments per building. 8 models to select from. 2, 3 and 4 bedroom apartments with rooftop penthouse.

Model	Total size	Floor	Bedrooms	Bathrooms	Terrace	Parkings
A	<b>275m<sup>2</sup></b>	ground floor	3 + MR&B	3	Double + Pool + Garden	2
B	<b>192m<sup>2</sup></b>	ground floor	2 + MR&B	2.5	Double + Pool + Garden	2
C	<b>170m<sup>2</sup></b>	1 <sup>st</sup> floor	3 + MR&B	3	Single	2
D	<b>144m<sup>2</sup></b>	1 <sup>st</sup> floor	2 + MR&B	2.5	Single	2
E	<b>252m<sup>2</sup></b>	2 <sup>nd</sup> & 3 <sup>rd</sup> floor	4 + MR&B	5	Double	2
F	<b>226m<sup>2</sup></b>	2 <sup>nd</sup> & 3 <sup>rd</sup> floor	4 + MR&B	4	Single	2
G	<b>190m<sup>2</sup></b>	2 <sup>nd</sup> & 3 <sup>rd</sup> floor	3 + MR&B	4	Single	2
I	<b>334m<sup>2</sup></b>	4 <sup>th</sup> floor	4 + MR&B	5	Triple	3

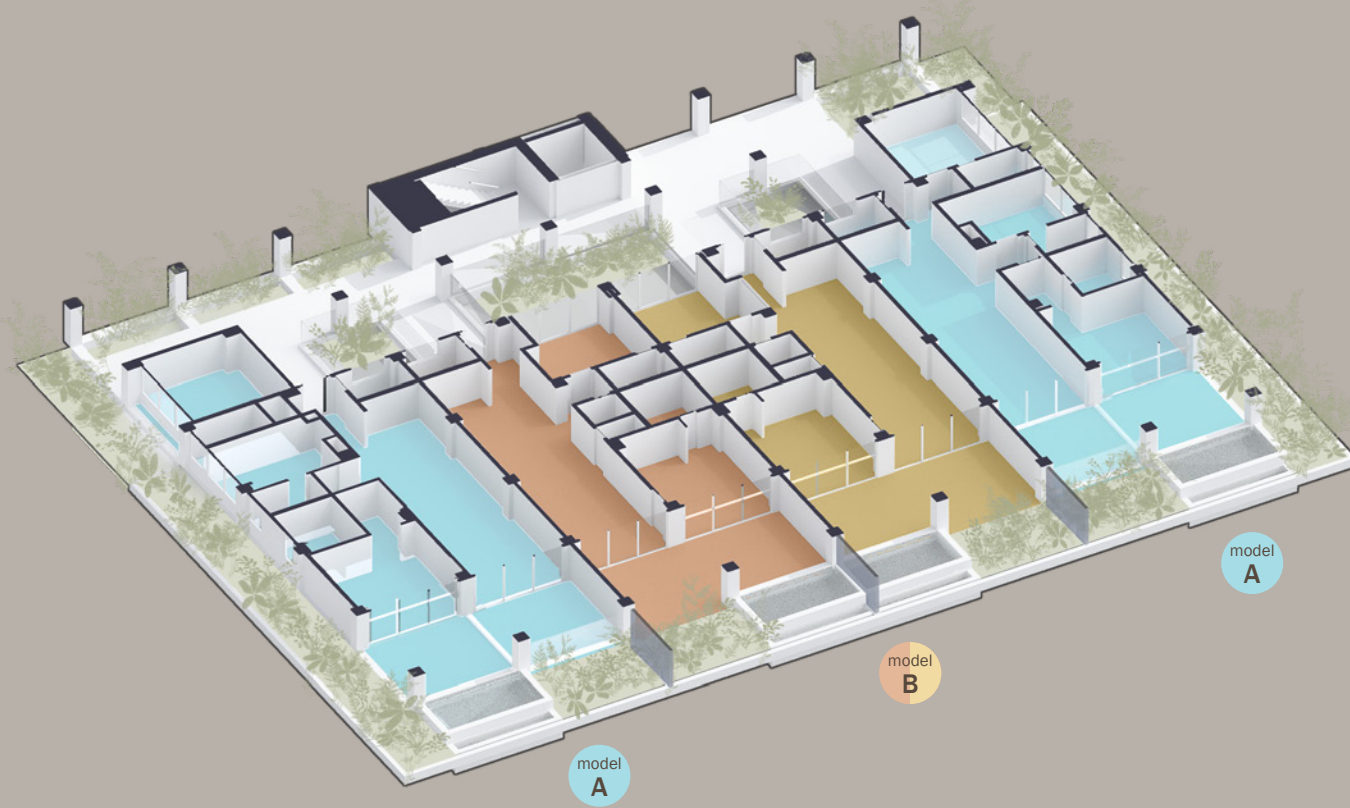
Portalmar Beachfront

# APARTMENTS



4 units

Ground floor



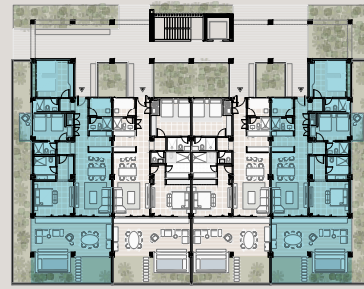
Portalmar Beachfront

# APARTMENTS

Ground floor

4 units

▲ landscape (inland)



▼ beachfront

Model A  
**275 m<sup>2</sup>**

Closed Area 149 m<sup>2</sup>  
Open Area 41 m<sup>2</sup>  
Garden Area 85 m<sup>2</sup>

3 Bedrooms + MR&B  
3 Bathrooms  
2 Terraces + pool



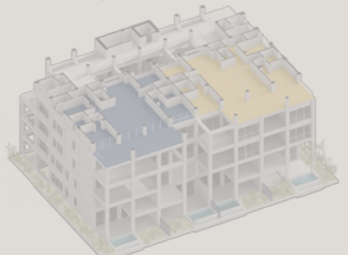
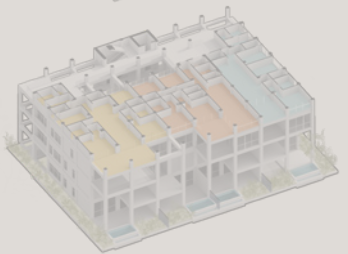
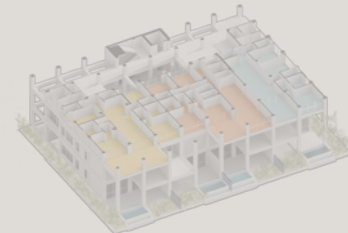
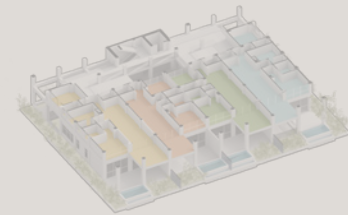
Model B  
**192 m<sup>2</sup>**

Closed Area 123 m<sup>2</sup>  
Open Area 40 m<sup>2</sup>  
Garden Area 29 m<sup>2</sup>

2 Bedrooms + MR&B  
2.5 Bathrooms  
1 Terrace + pool

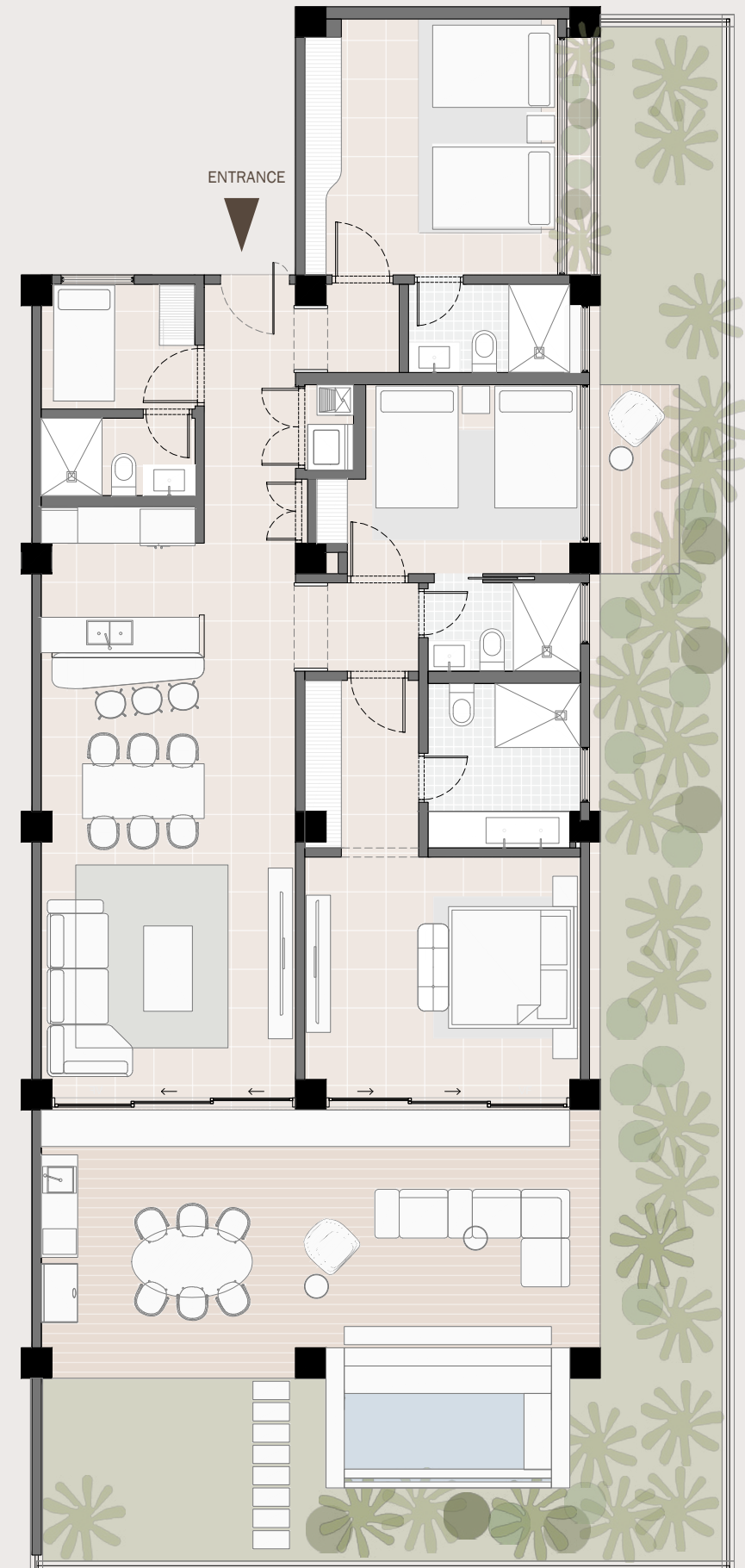


shown on the right



**DISCLAIMER**

Artist's conceptual visualization. All visualizations are suggestive concepts only. The project is in development and changes can happen without prior notice. The Developer reserves the right to modify, revise or withdraw any of the visualizations.



Portalmar Beachfront

# APARTMENTS

Ground floor

4 units

▲ landscape (inland)



▼ beachfront

Model A  
**275 m<sup>2</sup>**



Closed Area 149 m<sup>2</sup>  
Open Area 41 m<sup>2</sup>  
Garden Area 85 m<sup>2</sup>

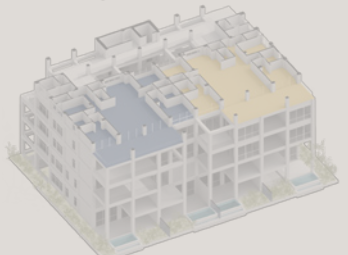
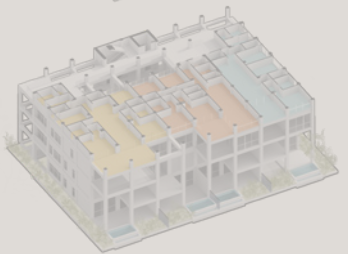
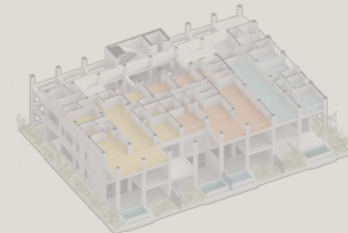
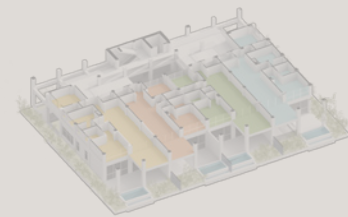
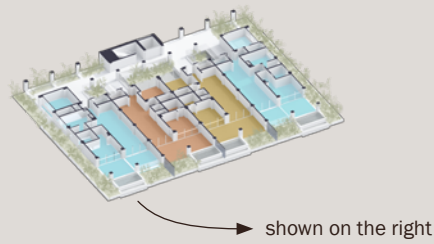
3 Bedrooms + MR&B  
3 Bathrooms  
2 Terraces + pool

Model B  
**192 m<sup>2</sup>**

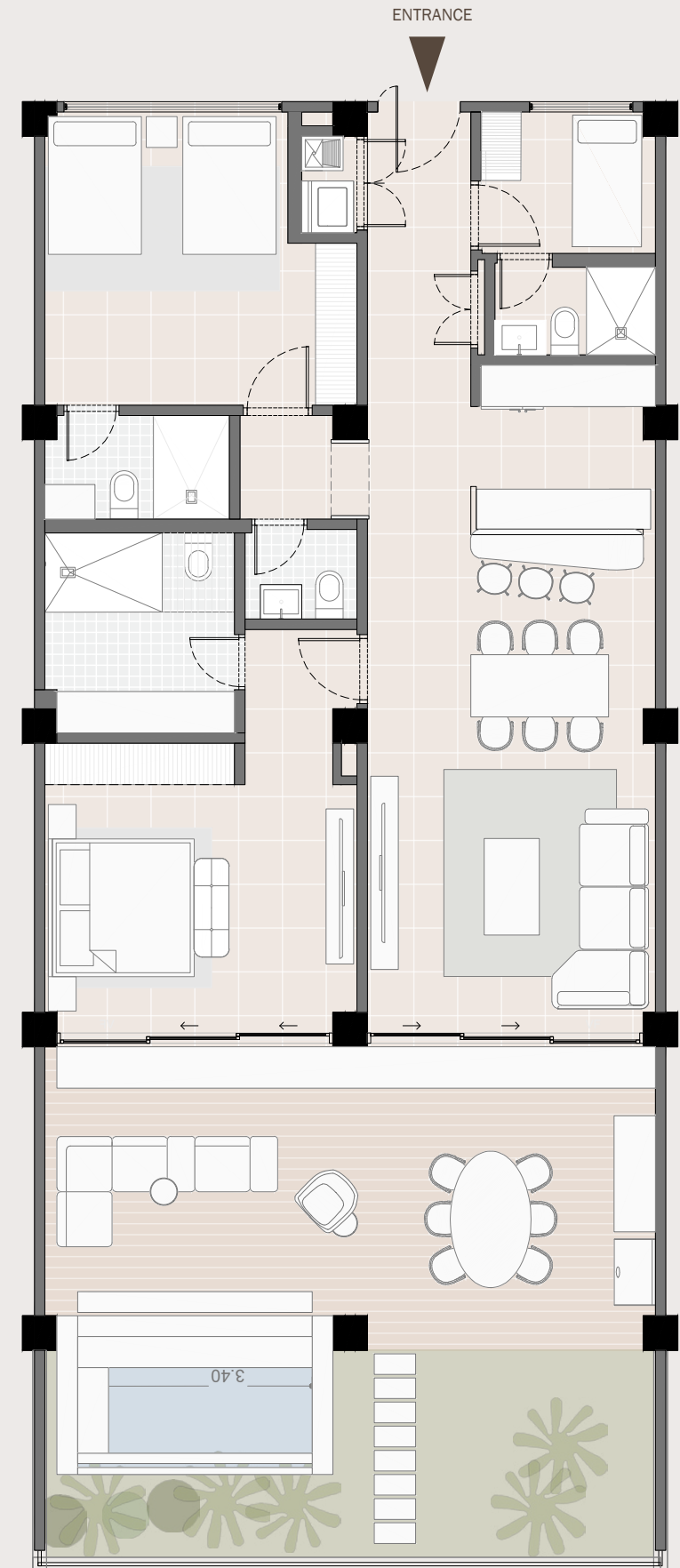


Closed Area 123 m<sup>2</sup>  
Open Area 40 m<sup>2</sup>  
Garden Area 29 m<sup>2</sup>

2 Bedrooms + MR&B  
2.5 Bathrooms  
1 Terrace + pool

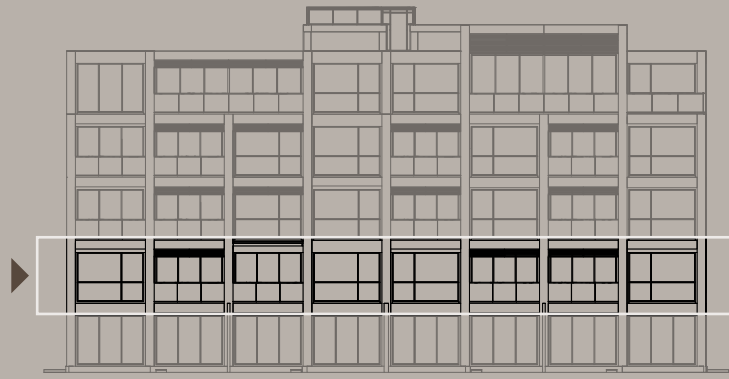


**DISCLAIMER**  
Artist's conceptual visualization. All visualizations are suggestive concepts only. The project is in development and changes can happen without prior notice. The Developer reserves the right to modify, revise or withdraw any of the visualizations.



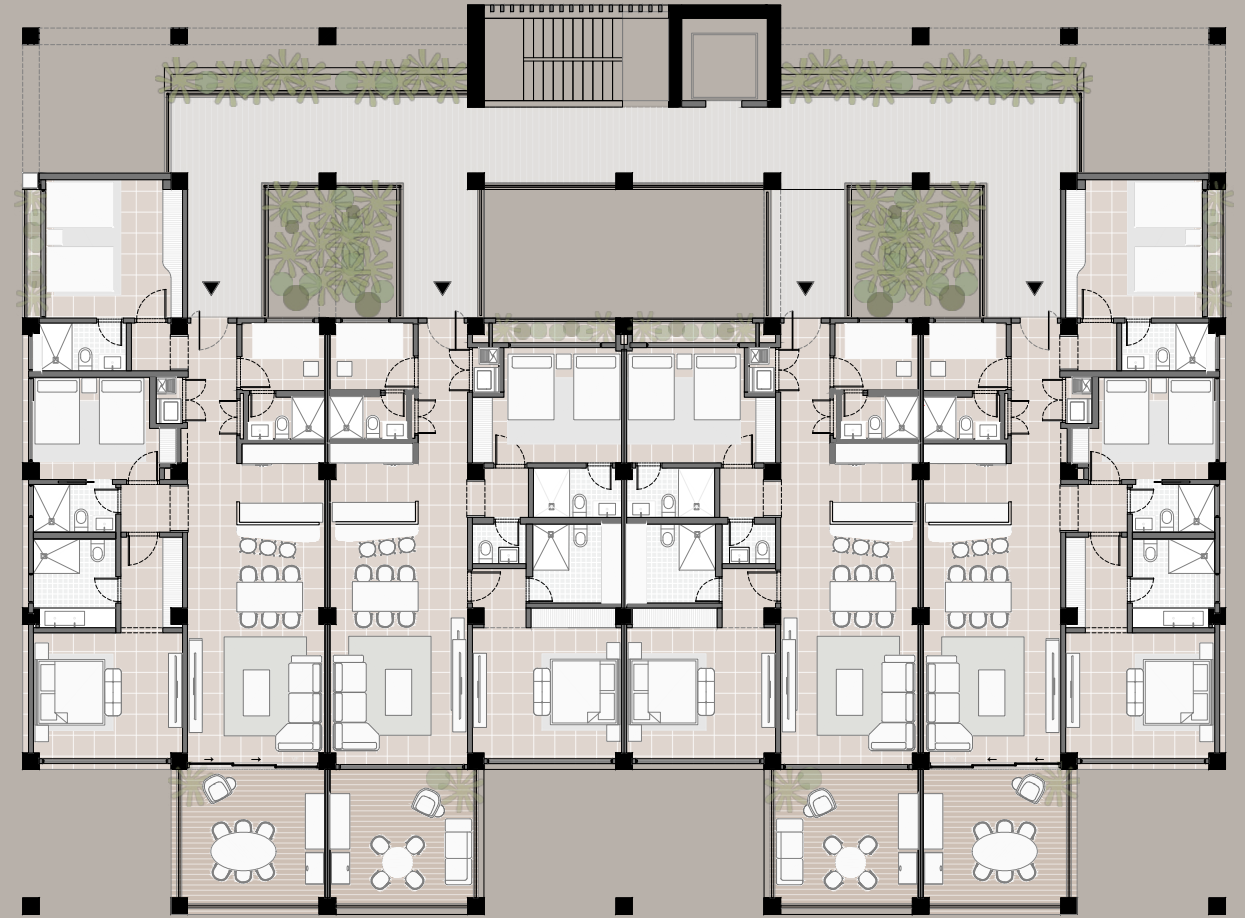
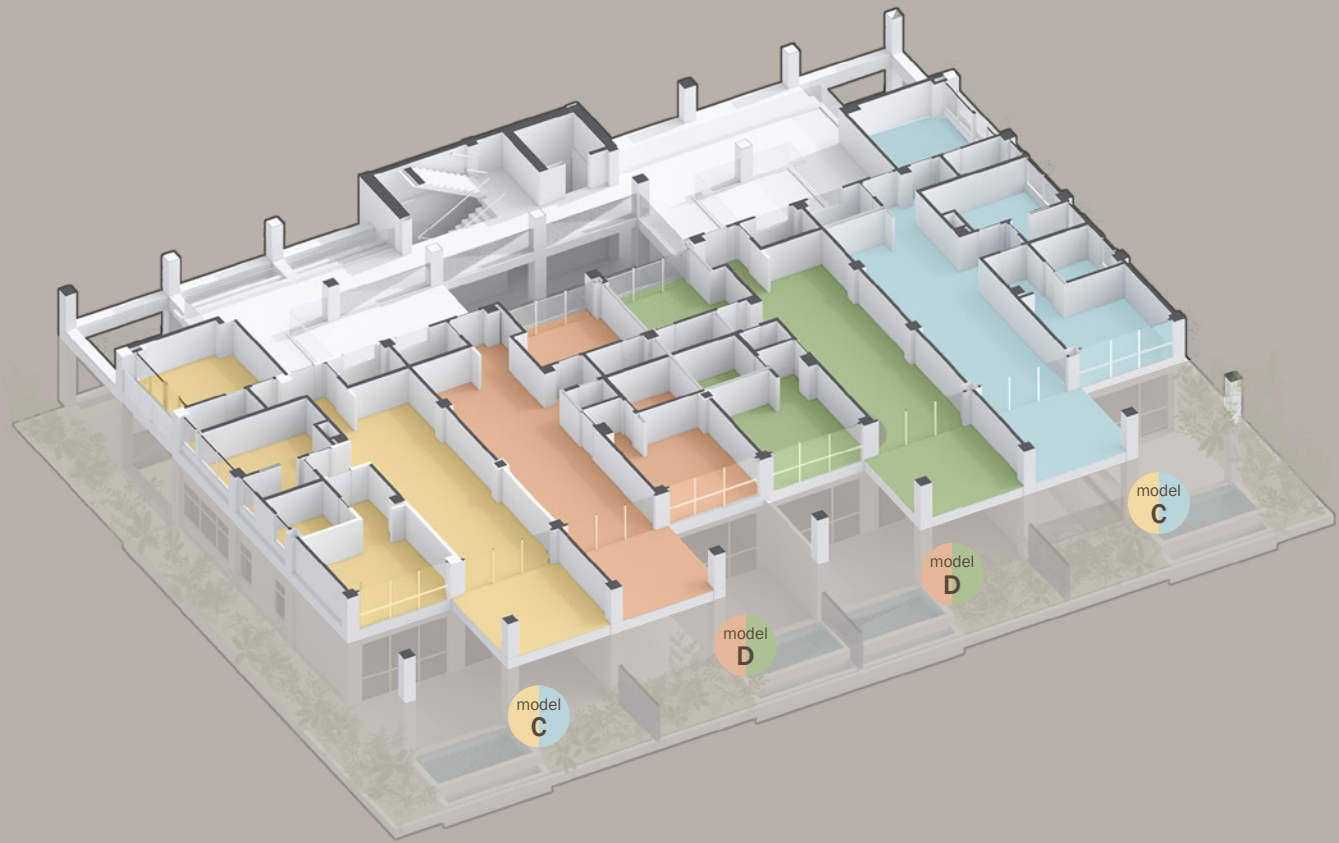
Portalmar Beachfront

# APARTMENTS



4 units

1<sup>st</sup> floor



Portalmar Beachfront

# APARTMENTS

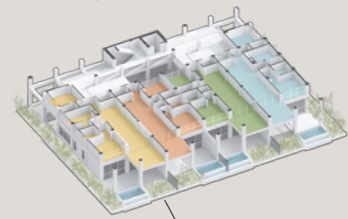
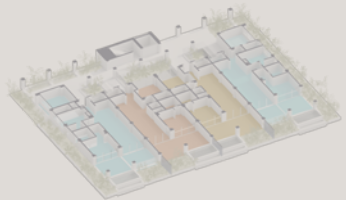
1<sup>st</sup> floor

4 units

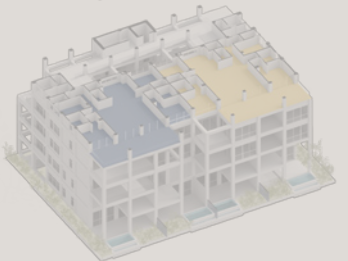
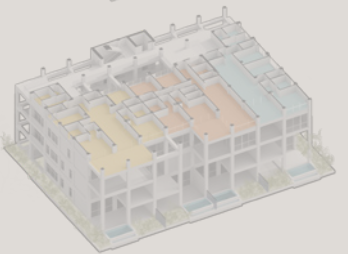
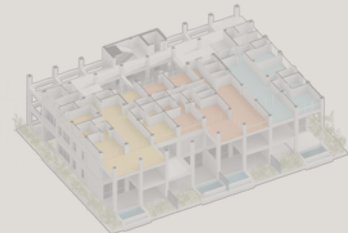
▲ landscape (inland)



▼ beachfront



shown on the right



**DISCLAIMER**

Artist's conceptual visualization. All visualizations are suggestive concepts only. The project is in development and changes can happen without prior notice. The Developer reserves the right to modify, revise or withdraw any of the visualizations.

Model C  
**170 m<sup>2</sup>**

Closed Area 149 m<sup>2</sup>  
Open Area 21 m<sup>2</sup>

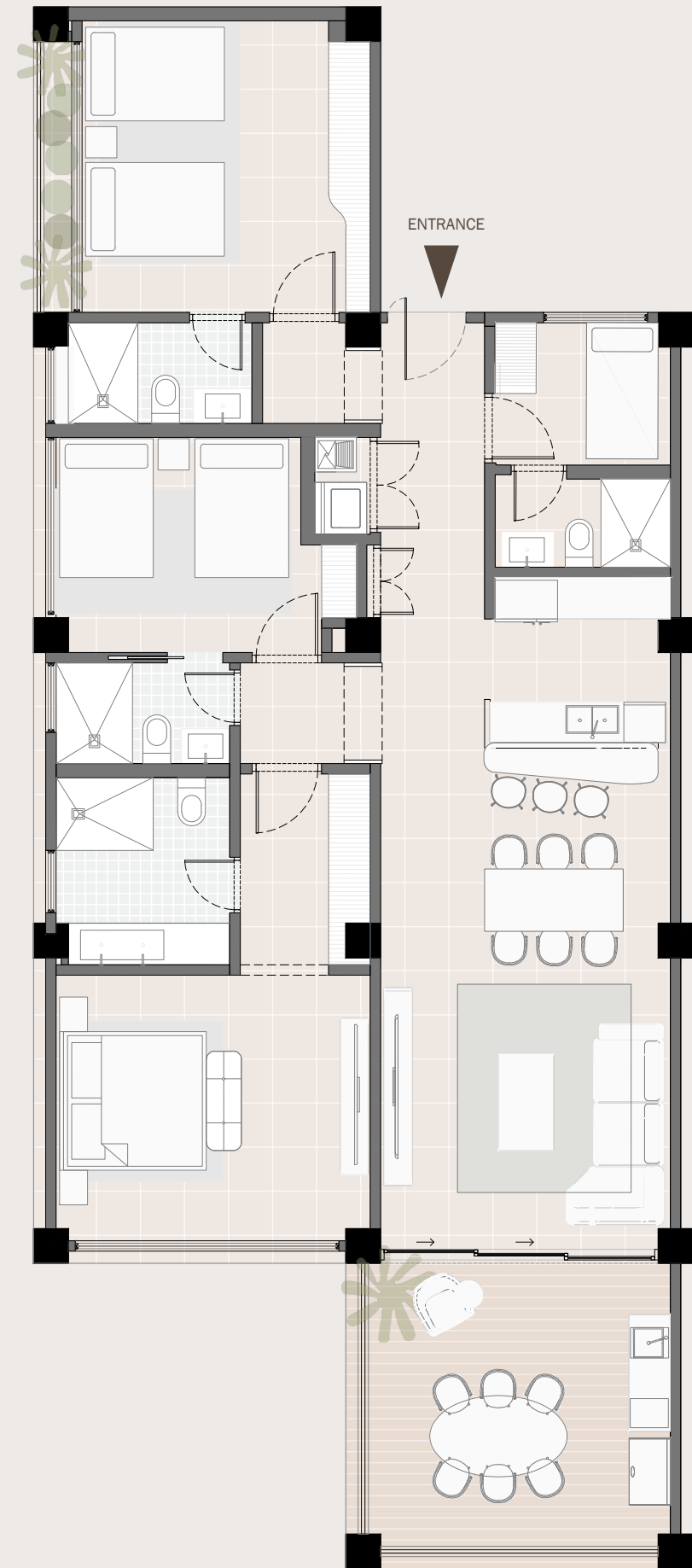
3 Bedrooms + MR&B  
3 Bathrooms  
1 Terrace



Model D  
**144 m<sup>2</sup>**

Closed Area 123 m<sup>2</sup>  
Open Area 21 m<sup>2</sup>

2 Bedrooms + MR&B  
2.5 Bathrooms  
1 Terrace



Portalmar Beachfront

# APARTMENTS

1<sup>st</sup> floor

4 units

▲ landscape (inland)



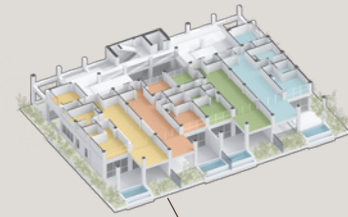
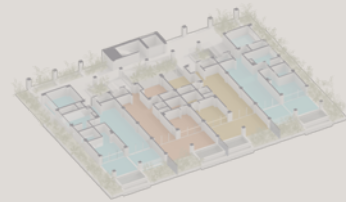
▼ beachfront

Model C

**170 m<sup>2</sup>**

Closed Area 149 m<sup>2</sup>  
Open Area 21 m<sup>2</sup>

3 Bedrooms + MR&B  
3 Bathrooms  
1 Terrace



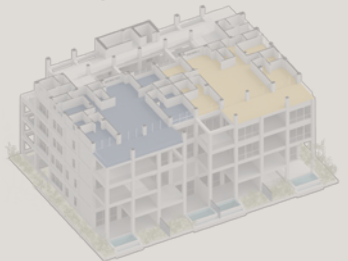
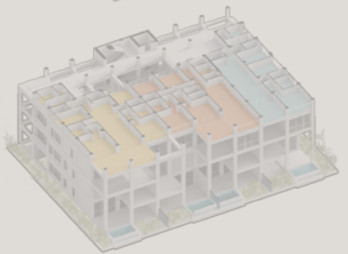
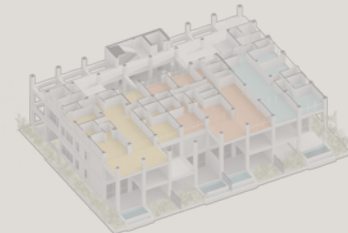
shown on the right

Model D

**144 m<sup>2</sup>**

Closed Area 123 m<sup>2</sup>  
Open Area 21 m<sup>2</sup>

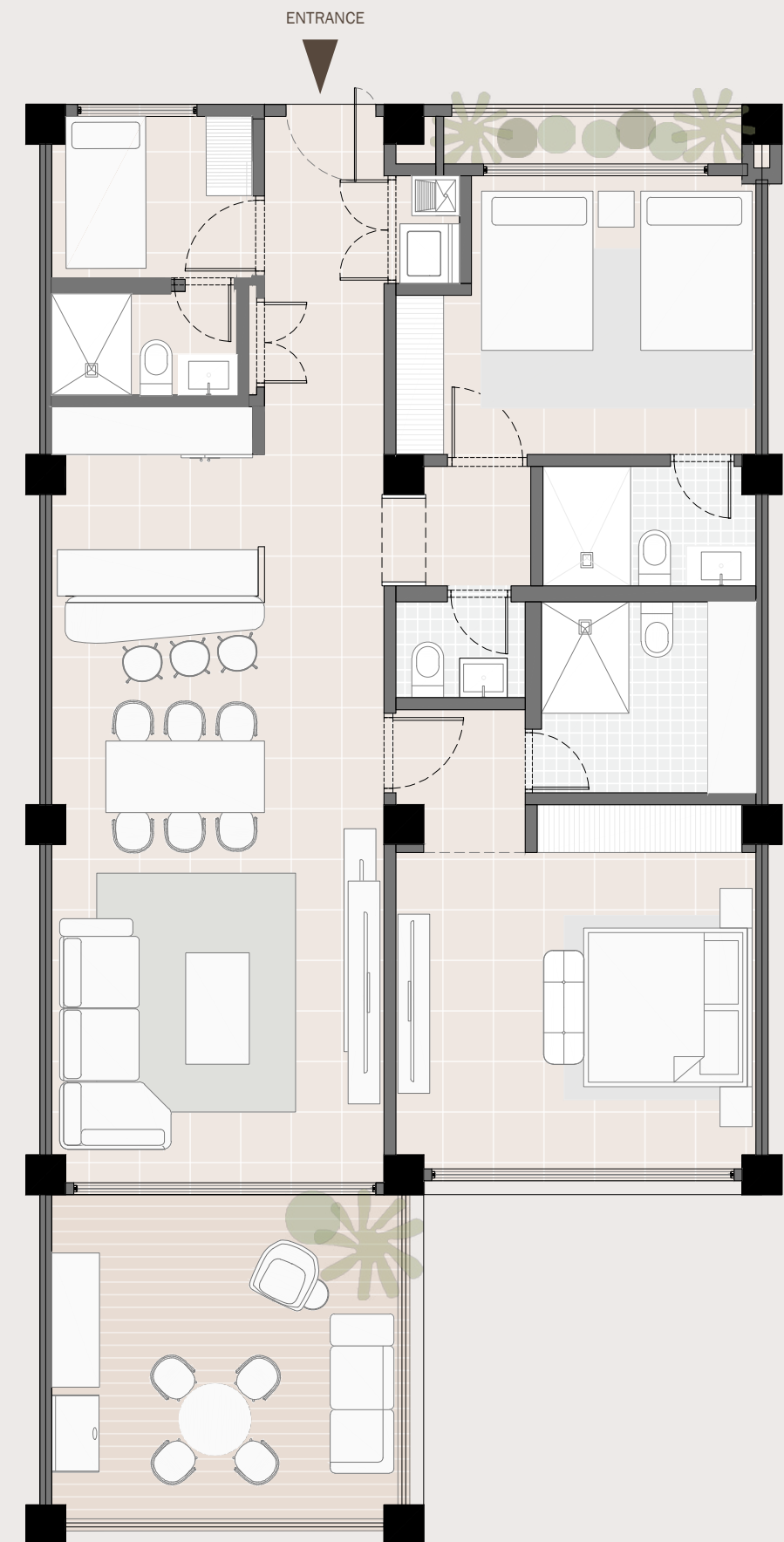
2 Bedrooms + MR&B  
2.5 Bathrooms  
1 Terrace



### DISCLAIMER

Artist's conceptual visualization. All visualizations are suggestive concepts only. The project is in development and changes can happen without prior notice. The Developer reserves the right to modify, revise or withdraw any of the visualizations.

model  
**D**



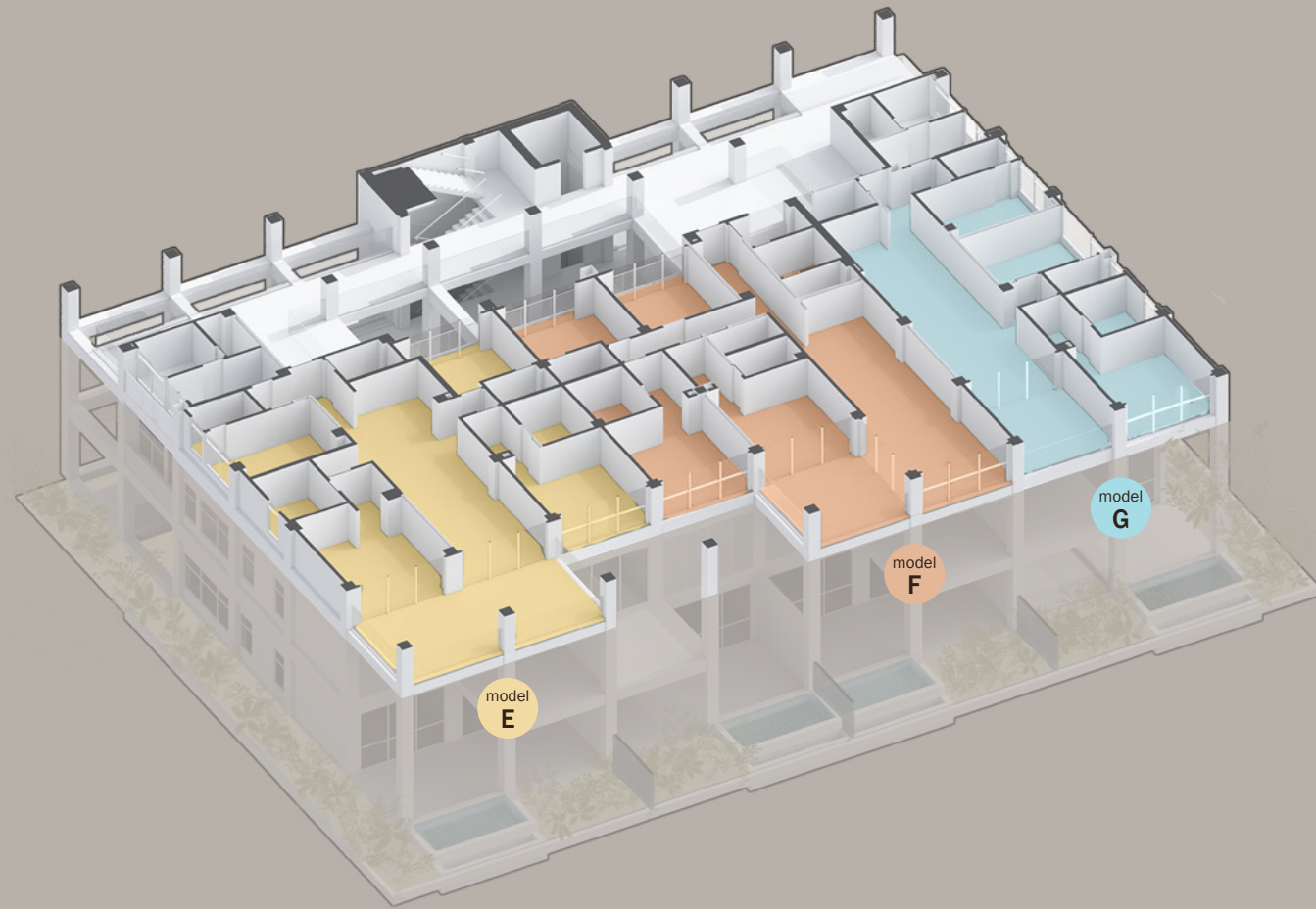
Portalmar Beachfront

# APARTMENTS



3 units

2<sup>nd</sup> floor



Portalmar Beachfront

# APARTMENTS

2<sup>nd</sup> floor

3 units

▲ landscape (inland)



▼ beachfront

Model E

**252 m<sup>2</sup>**

Closed Area 210 m<sup>2</sup>  
Open Area 42 m<sup>2</sup>

4 Bedrooms + MR&B  
5 Bathrooms  
1 Terrace

model  
**E**

Model F

**226 m<sup>2</sup>**

Closed Area 205 m<sup>2</sup>  
Open Area 21 m<sup>2</sup>

4 Bedrooms + MR&B  
4 Bathrooms  
1 Terrace

model  
**F**

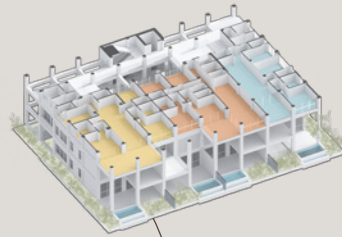
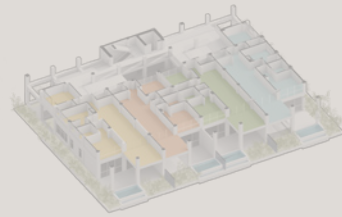
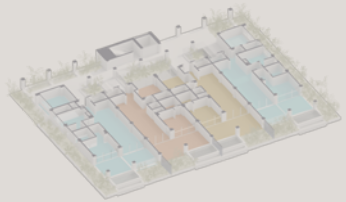
Model G

**190 m<sup>2</sup>**

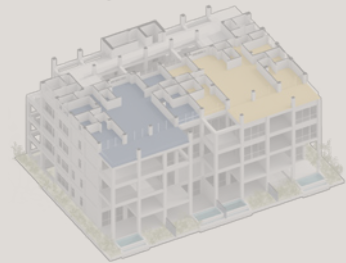
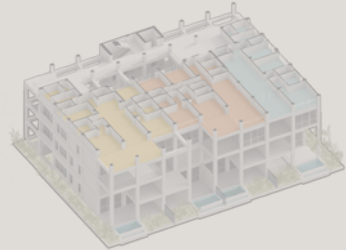
Closed Area 170 m<sup>2</sup>  
Open Area 20 m<sup>2</sup>

3 Bedrooms + MR&B  
4 Bathrooms  
1 Terrace

model  
**G**



shown on the right



**DISCLAIMER**

Artist's conceptual visualization. All visualizations are suggestive concepts only. The project is in development and changes can happen without prior notice. The Developer reserves the right to modify, revise or withdraw any of the visualizations.



Portalmar Beachfront

# APARTMENTS

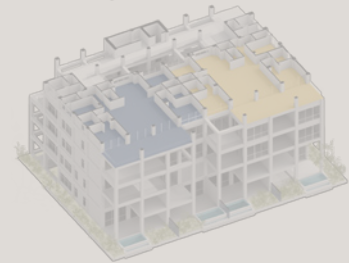
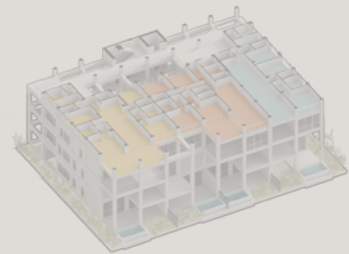
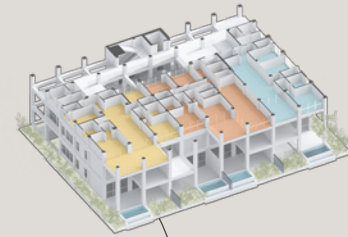
2<sup>nd</sup> floor

3 units

▲ landscape (inland)



▼ beachfront



**DISCLAIMER**

Artist's conceptual visualization. All visualizations are suggestive concepts only. The project is in development and changes can happen without prior notice. The Developer reserves the right to modify, revise or withdraw any of the visualizations.

Model E  
**252 m<sup>2</sup>**

Closed Area 210 m<sup>2</sup>  
Open Area 42 m<sup>2</sup>

4 Bedrooms + MR&B  
5 Bathrooms  
1 Terrace

model  
**E**

Model F  
**226 m<sup>2</sup>**

Closed Area 205 m<sup>2</sup>  
Open Area 21 m<sup>2</sup>

4 Bedrooms + MR&B  
4 Bathrooms  
1 Terrace

model  
**F**

Model G  
**190 m<sup>2</sup>**

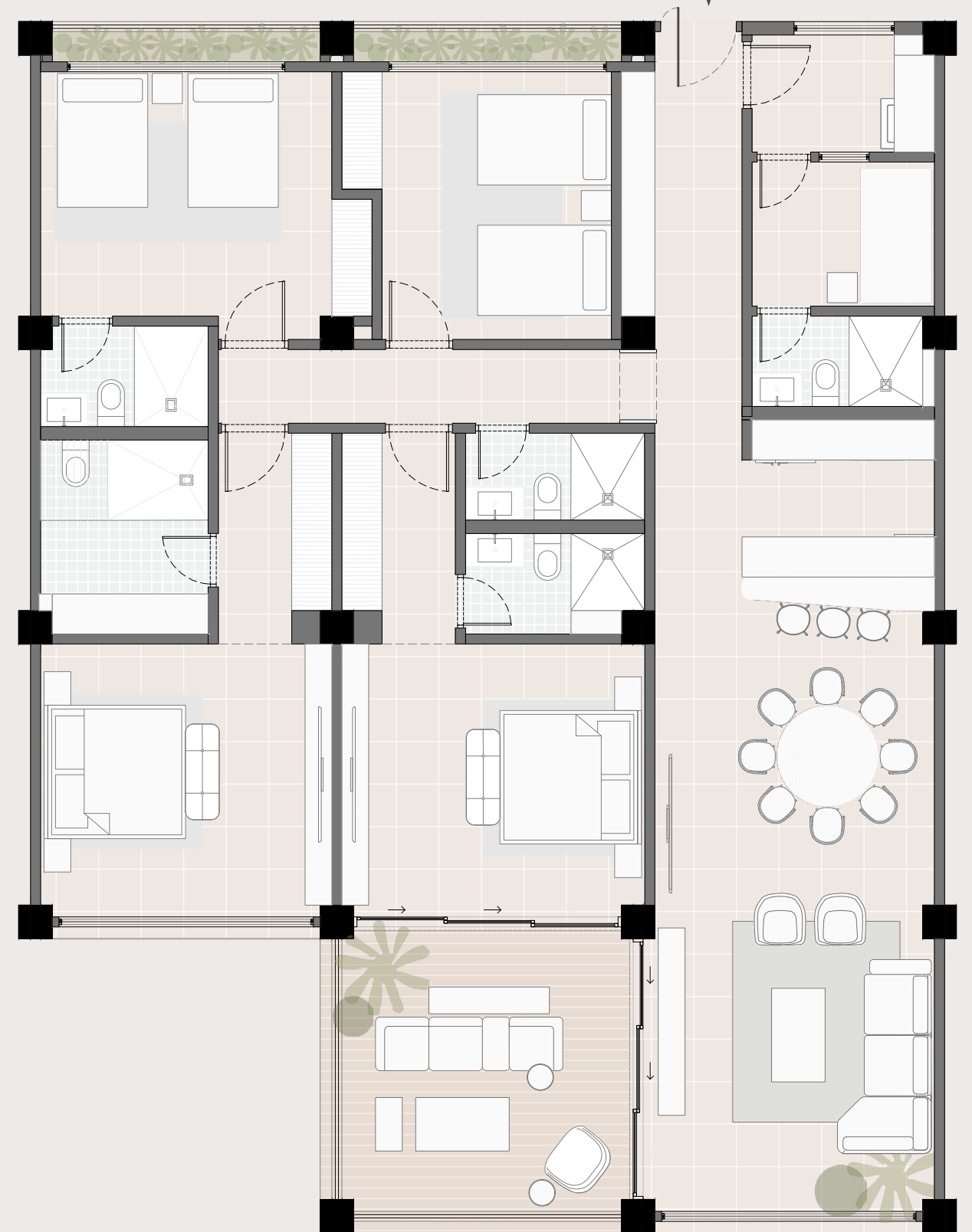
Closed Area 170 m<sup>2</sup>  
Open Area 20 m<sup>2</sup>

3 Bedrooms + MR&B  
4 Bathrooms  
1 Terrace

model  
**G**

model  
**F**

ENTRANCE



Portalmar Beachfront

# APARTMENTS

2<sup>nd</sup> floor

3 units

▲ landscape (inland)



▼ beachfront

Model E  
**252 m<sup>2</sup>**

model  
**E**

Closed Area 210 m<sup>2</sup>  
Open Area 42 m<sup>2</sup>

4 Bedrooms + MR&B  
5 Bathrooms  
1 Terrace

Model F  
**226 m<sup>2</sup>**

model  
**F**

Closed Area 205 m<sup>2</sup>  
Open Area 21 m<sup>2</sup>

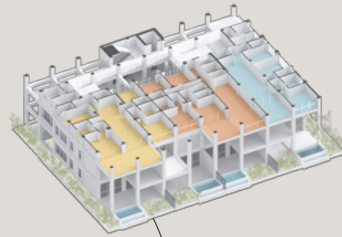
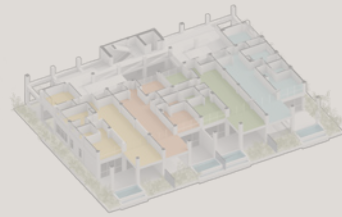
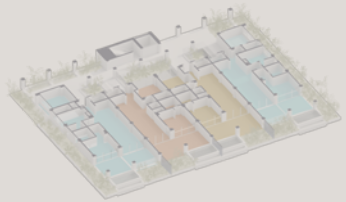
4 Bedrooms + MR&B  
4 Bathrooms  
1 Terrace

Model G  
**190 m<sup>2</sup>**

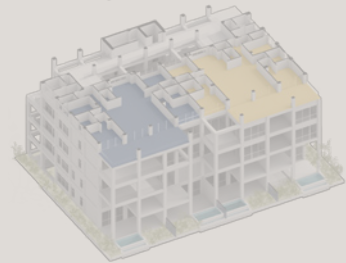
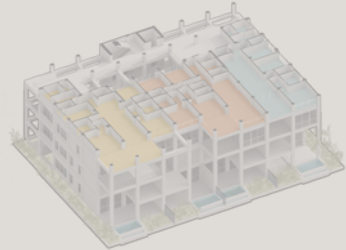
model  
**G**

Closed Area 170 m<sup>2</sup>  
Open Area 20 m<sup>2</sup>

3 Bedrooms + MR&B  
4 Bathrooms  
1 Terrace

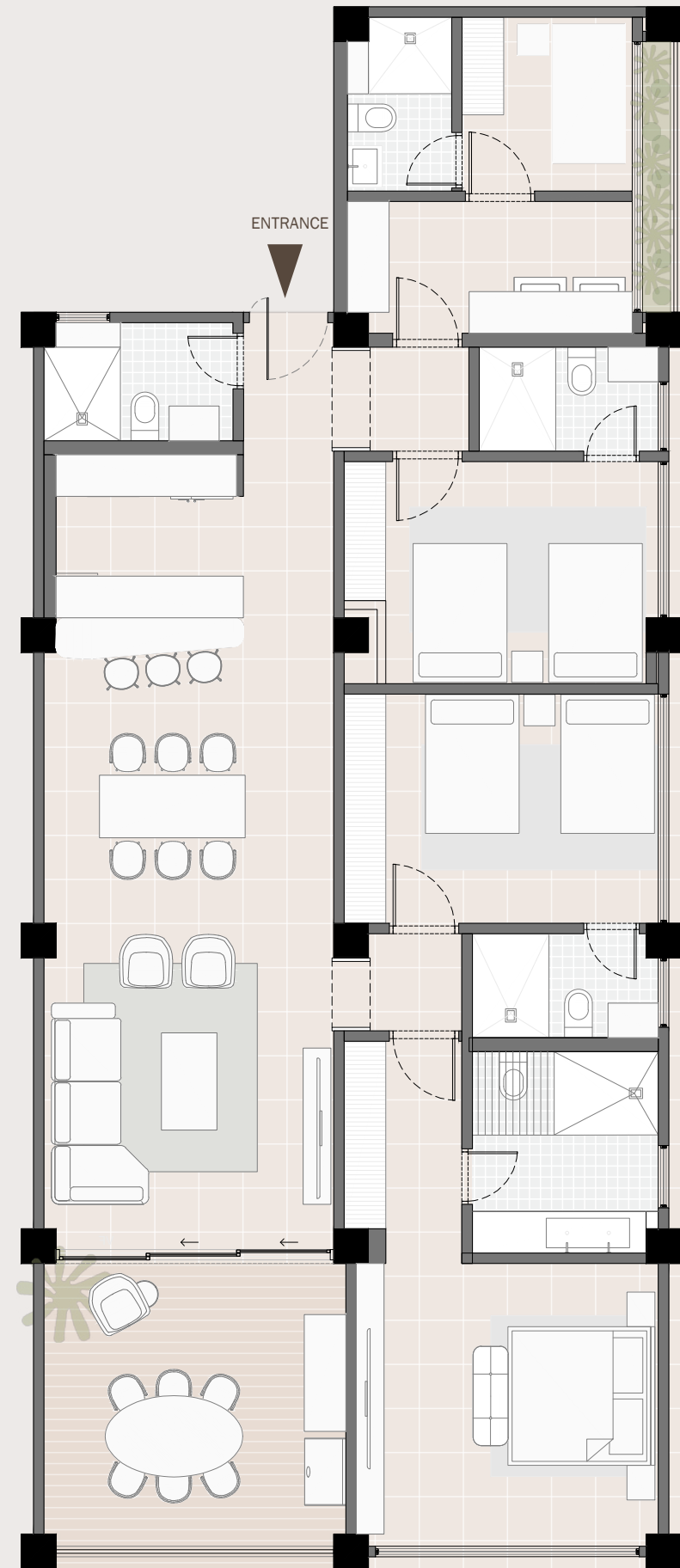


→ shown on the right



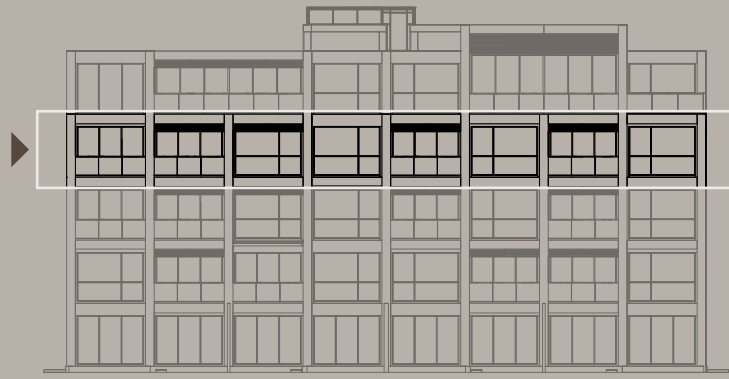
**DISCLAIMER**

Artist's conceptual visualization. All visualizations are suggestive concepts only. The project is in development and changes can happen without prior notice. The Developer reserves the right to modify, revise or withdraw any of the visualizations.



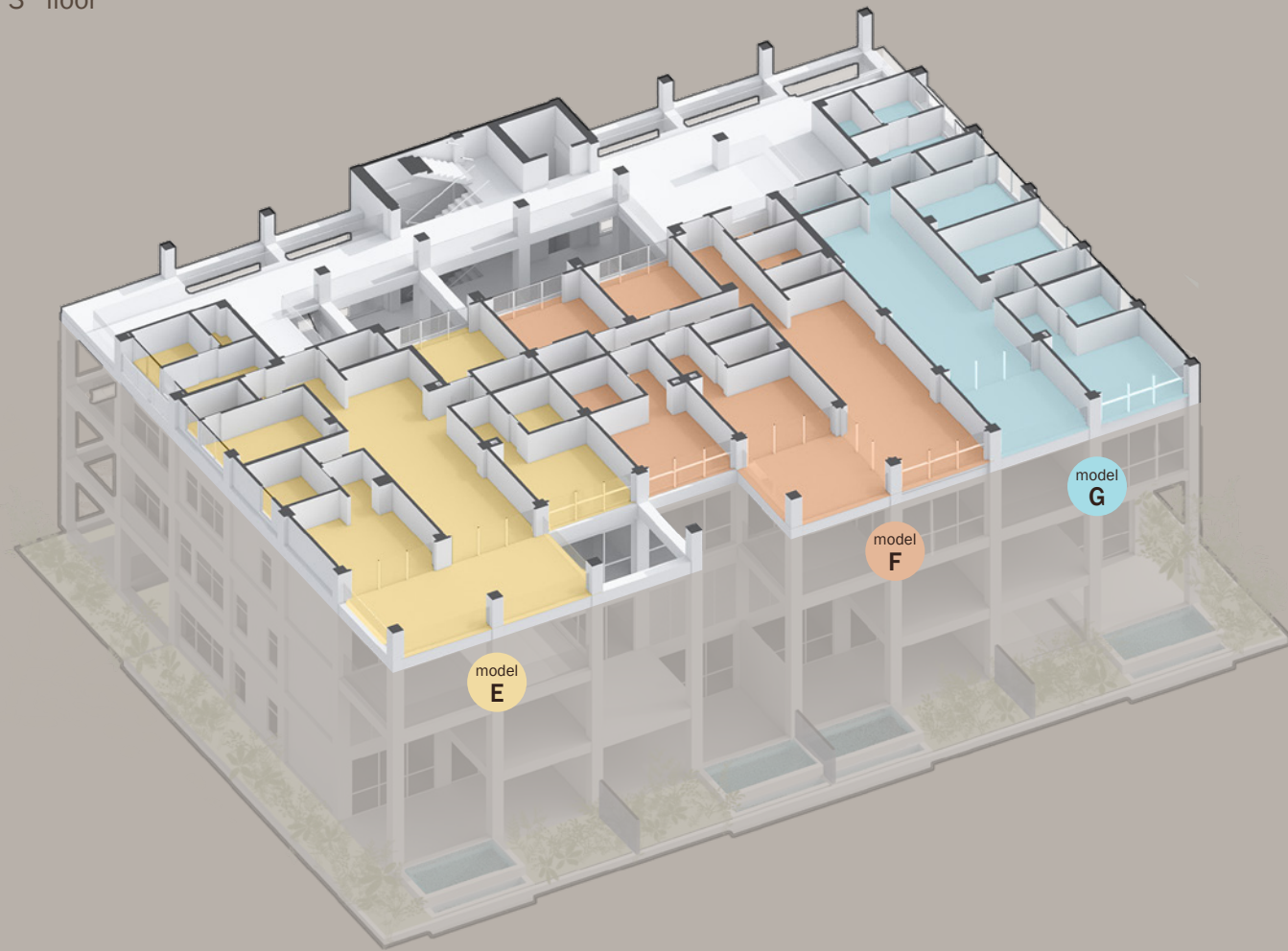
Portalmar Beachfront

# APARTMENTS



3 units

3<sup>rd</sup> floor



Portalmar Beachfront

# APARTMENTS

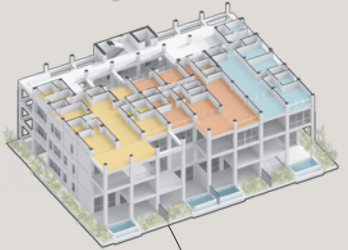
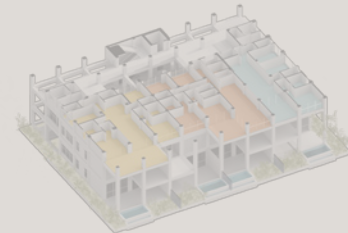
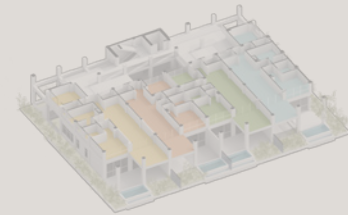
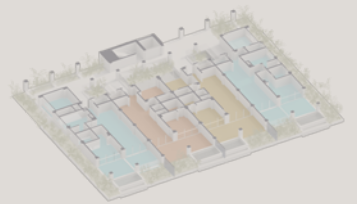
3<sup>rd</sup> floor

3 units

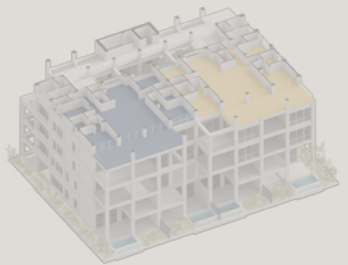
▲ landscape (inland)



▼ beachfront



→ shown on the right



**DISCLAIMER**

Artist's conceptual visualization. All visualizations are suggestive concepts only. The project is in development and changes can happen without prior notice. The Developer reserves the right to modify, revise or withdraw any of the visualizations.

Model E  
**252 m<sup>2</sup>**

model  
**E**

Closed Area 210 m<sup>2</sup>  
Open Area 42 m<sup>2</sup>

4 Bedrooms + MR&B  
5 Bathrooms  
1 Terrace

Model F  
**226 m<sup>2</sup>**

model  
**F**

Closed Area 205 m<sup>2</sup>  
Open Area 21 m<sup>2</sup>

4 Bedrooms + MR&B  
4 Bathrooms  
1 Terrace

Model G  
**190 m<sup>2</sup>**

model  
**G**

Closed Area 170 m<sup>2</sup>  
Open Area 20 m<sup>2</sup>

3 Bedrooms + MR&B  
4 Bathrooms  
1 Terrace



Portalmar Beachfront

# APARTMENTS

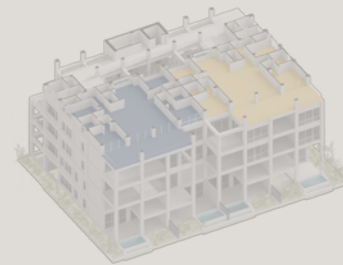
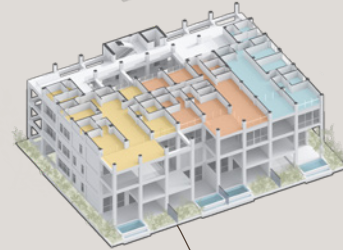
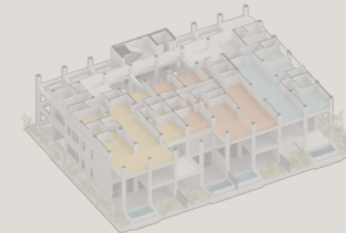
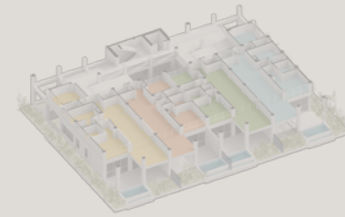
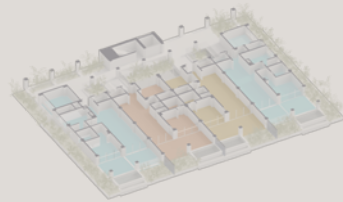
3<sup>rd</sup> floor

3 units

▲ landscape (inland)



▼ beachfront



**DISCLAIMER**

Artist's conceptual visualization. All visualizations are suggestive concepts only. The project is in development and changes can happen without prior notice. The Developer reserves the right to modify, revise or withdraw any of the visualizations.

Model E  
**252 m<sup>2</sup>**

Closed Area 210 m<sup>2</sup>  
Open Area 42 m<sup>2</sup>

4 Bedrooms + MR&B  
5 Bathrooms  
1 Terrace

model  
**E**

Model F  
**226 m<sup>2</sup>**

Closed Area 205 m<sup>2</sup>  
Open Area 21 m<sup>2</sup>

4 Bedrooms + MR&B  
4 Bathrooms  
1 Terrace

model  
**F**

Model G  
**190 m<sup>2</sup>**

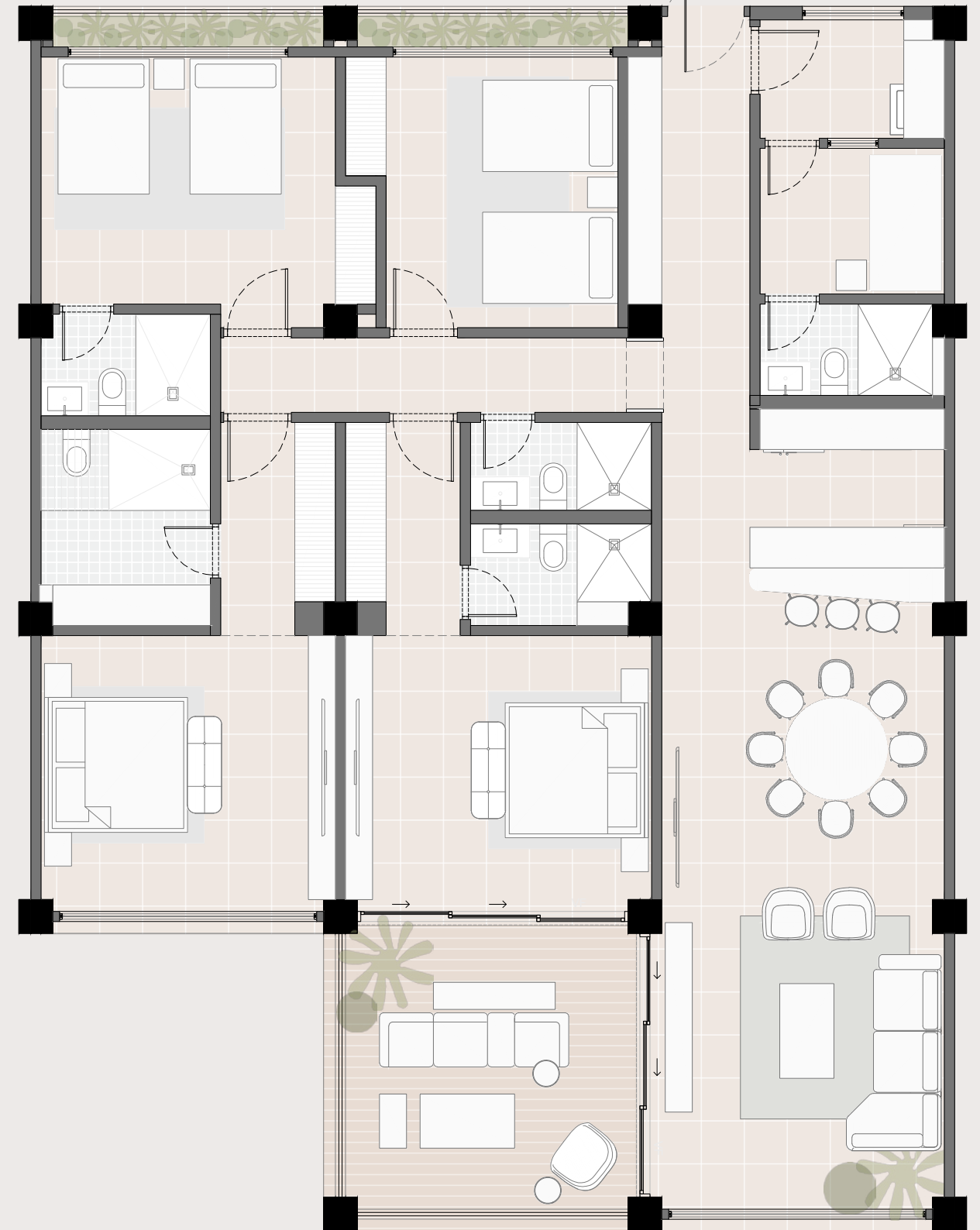
Closed Area 170 m<sup>2</sup>  
Open Area 20 m<sup>2</sup>

3 Bedrooms + MR&B  
4 Bathrooms  
1 Terrace

model  
**G**

model  
**F**

ENTRANCE



Portalmar Beachfront

# APARTMENTS

3<sup>rd</sup> floor

3 units

▲ landscape (inland)



▼ beachfront

Model E  
**252 m<sup>2</sup>**

model  
**E**

Closed Area 210 m<sup>2</sup>  
Open Area 42 m<sup>2</sup>

4 Bedrooms + MR&B  
5 Bathrooms  
1 Terrace

Model F  
**226 m<sup>2</sup>**

model  
**F**

Closed Area 205 m<sup>2</sup>  
Open Area 21 m<sup>2</sup>

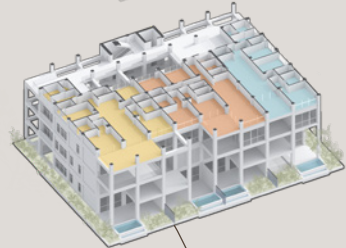
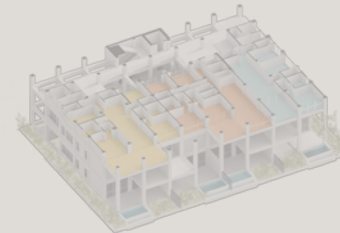
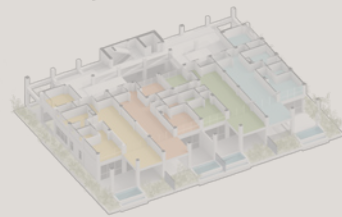
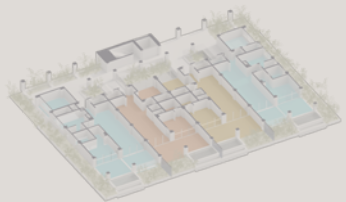
4 Bedrooms + MR&B  
4 Bathrooms  
1 Terrace

Model G  
**190 m<sup>2</sup>**

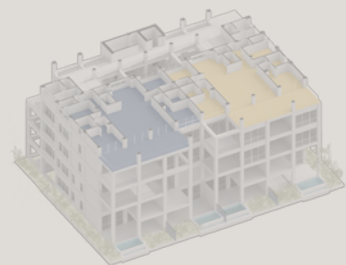
model  
**G**

Closed Area 170 m<sup>2</sup>  
Open Area 20 m<sup>2</sup>

3 Bedrooms + MR&B  
4 Bathrooms  
1 Terrace

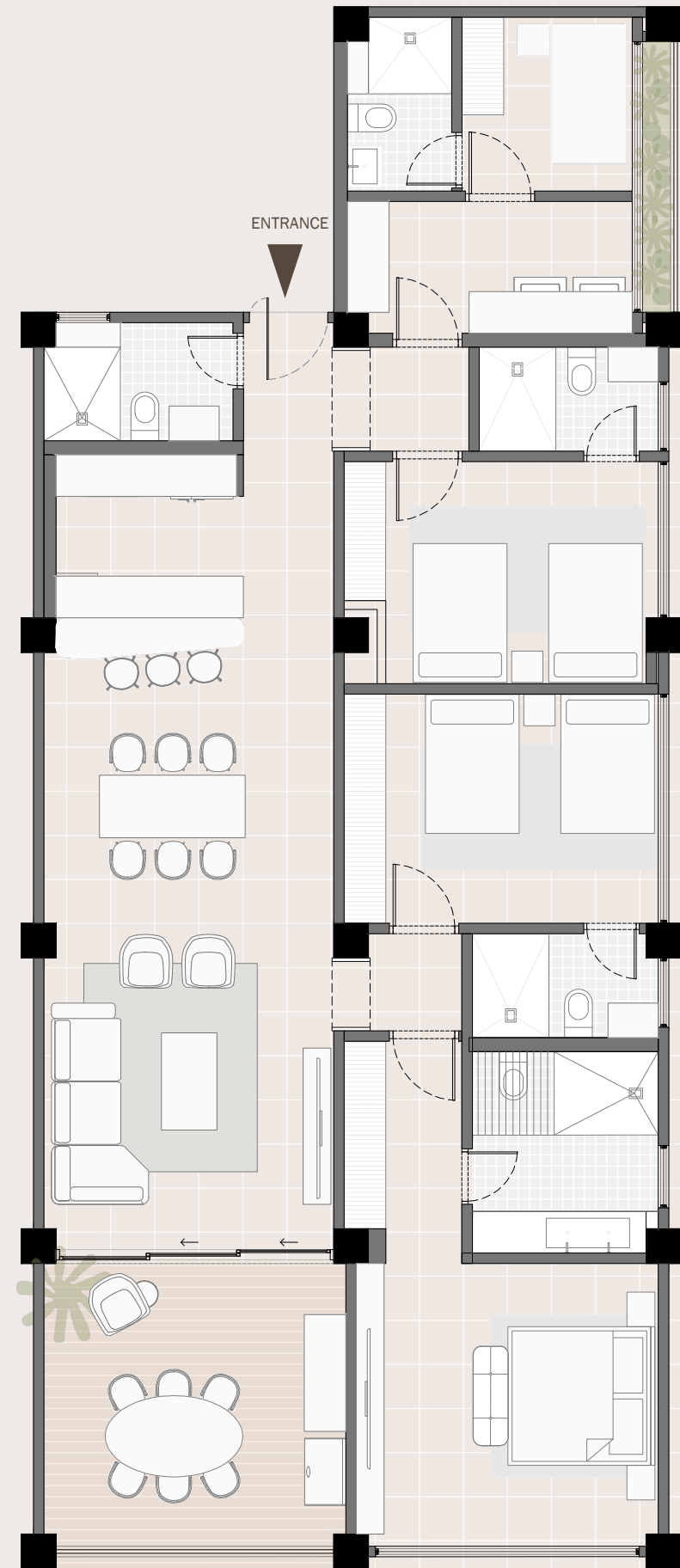


shown on the right



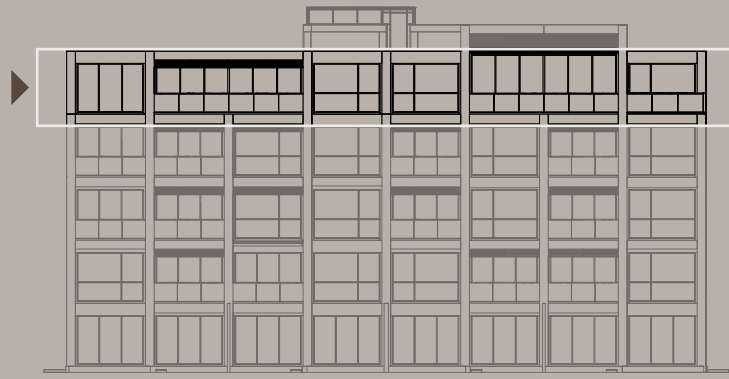
**DISCLAIMER**

Artist's conceptual visualization. All visualizations are suggestive concepts only. The project is in development and changes can happen without prior notice. The Developer reserves the right to modify, revise or withdraw any of the visualizations.



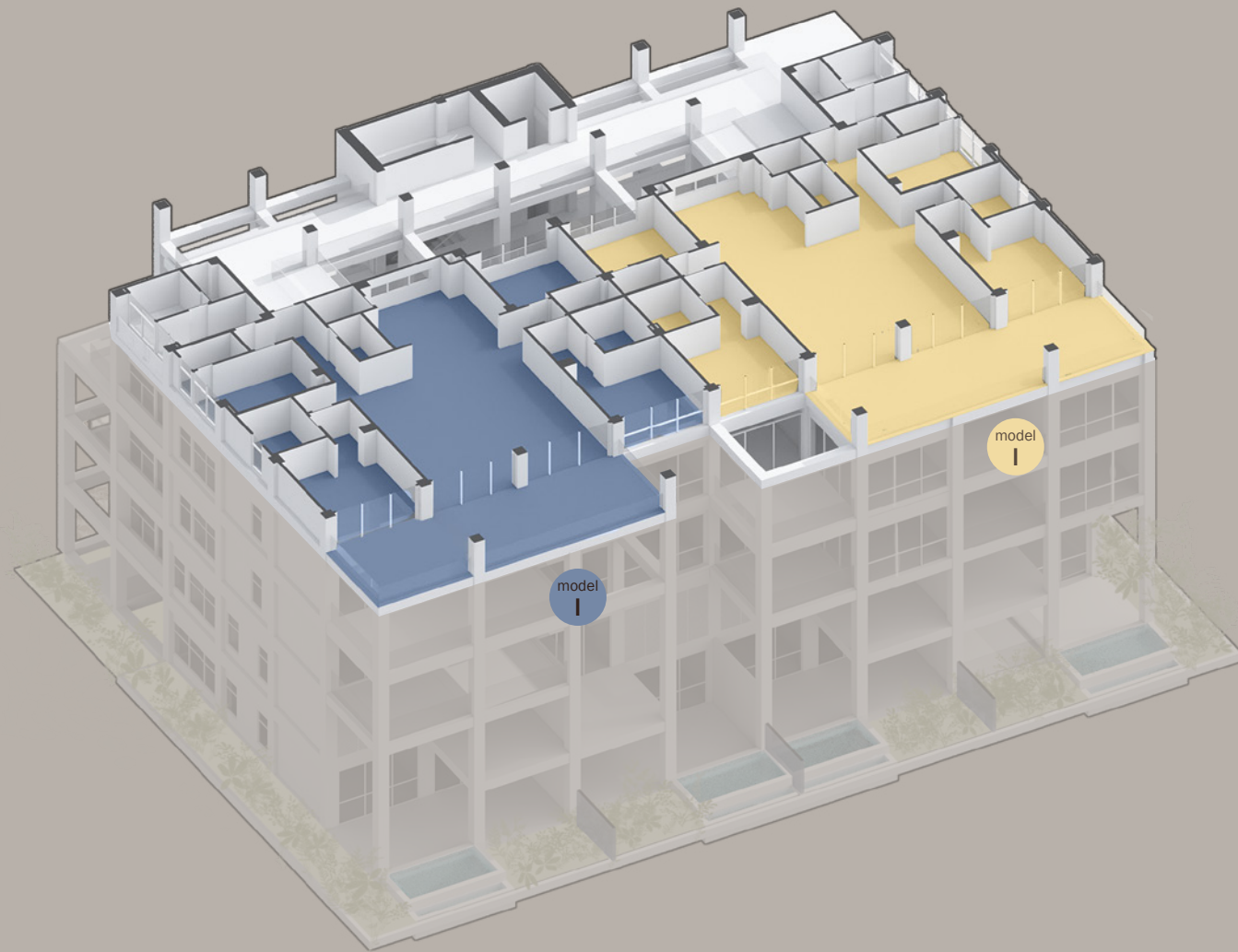
Portalmar Beachfront

# APARTMENTS



2 units

4<sup>th</sup> floor



Portalmar Beachfront

# APARTMENTS

4<sup>th</sup> floor

▲ landscape (inland)



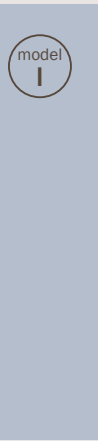
▼ beachfront

2 units

Model I  
**334 m<sup>2</sup>**

Closed Area 272 m<sup>2</sup>  
Open Area 62 m<sup>2</sup>

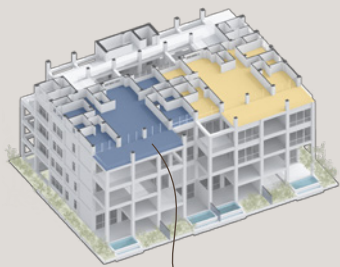
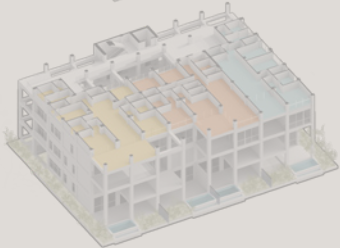
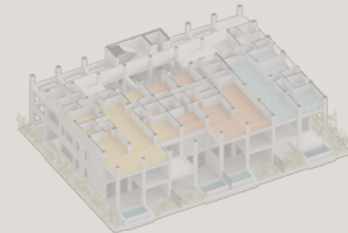
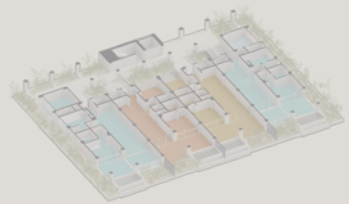
4 Bedrooms + MR&B  
5 Bathrooms  
1 Terrace



Model I  
**334 m<sup>2</sup>**

Closed Area 272 m<sup>2</sup>  
Open Area 62 m<sup>2</sup>

4 Bedrooms + MR&B  
5 Bathrooms  
1 Terrace



→ shown on the right

**DISCLAIMER**

Artist's conceptual visualization. All visualizations are suggestive concepts only. The project is in development and changes can happen without prior notice. The Developer reserves the right to modify, revise or withdraw any of the visualizations.





DESIGN

# EXOTIC MATERIALS

Panama is surrounded by water on both sides, with the Pacific Ocean to the south and the Atlantic Ocean, facing the Caribbean, to the north. This unique geography contributes to one of the most challenging climates on the planet.

From interiors to exteriors, each of the over 50 materials and finishes used in Portalmar's beachfront residences, hotel and marina, have been meticulously hand-selected by our specialists to ensure both exceptional functionality and a distinctive high-end Caribbean style.







**BUILDING 5**  
Opening sales  
January 2027

**BUILDING 4**  
Opening sales  
January 2027

**BUILDING 3**  
16 apartments  
Selling now

**BUILDING 2**  
16 apartments  
Selling now

**BUILDING 1**  
16 apartments  
Sold out!

**BEACH CLUB**  
Opening January 2027

**HOTEL**  
& Wellness Center  
Opening January 2027

**MARINA**  
Coming 2027/2028



OUR TEAM

# INTERNATIONAL EXPERTS

In the dynamic landscape of real estate development, the undeniable value of collaborating with industry experts and a careful selection of specialists cannot be overstated.

## ONLY THE BEST IS GOOD ENOUGH

The professionals gathered to work on Portalmar bring a wealth of knowledge, experience and innovative perspectives to the table, each contributing uniquely to Portalmar's success. From architects and engineers to financial consultants, interior design, brand and marketing strategists, their individual expertise ensures that every aspect of the development is meticulously

planned and executed. Furthermore, the synergy created through their collaborative efforts amplifies the overall impact, driving Portalmar toward unparalleled excellence. This collective intelligence not only mitigates risks but also unlocks new opportunities, setting the stage for a landmark development that can stand the test of time.

Developer



Master Planning



Marina and Waterfront Design



Architecture and Interior Design



Development and Project Management



CARIBBEAN SEA  
PANAMA

All visuals are the artist's conceptual interpretation and may not fully and or accurately reflect the final design.





RESIDENCES  
HOTEL  
MARINA  
BEACH  
PRIVATE ISLANDS  
BEACH VILLAS  
AMENITIES  
ATTRACTIONS  
BEACH CLUB & BAR  
RESTAURANTS  
PARKS & TRAILS  
HILLSIDE VIEW POINT





# PORTALMAR

CARIBBEAN BEACHFRONT PARADISE™

CARIBBEAN SEA,

PANAMA.

Developer



Master Planning



Marina and  
Waterfront Design



Architecture  
and Interior Design



Development and  
Project Management



**DISCLAIMER.** The collection of visualizations herein presents suggestive concepts only. The project is in development where sketches, renderings, graphic materials, plans, specifications, terms, conditions and descriptions used are proposed concepts only, and the Developer reserves the right to modify, revise or withdraw any or all designs without prior notice.